

2022

City of Newcastle

Advocacy



newcastle.nsw.gov.au



City of
Newcastle



Smoking ceremony held at the new City Administration Centre building at 12 Stewart Avenue. The ceremony also included; Wakakulang Dance Troupe, Aboriginal catering and a special guest talk by artist Saretta Fielding.

Welcome

Acknowledgment

We recognise and respect the cultural heritage, beliefs and continuing relationship with the land of the Awabakal and Worimi peoples. We acknowledge the proud survivors of more than two hundred years of resistance.

The City of Newcastle reiterates its commitment to address disadvantages and to support Aboriginal and Torres Strait Islander peoples of this community to attain justice.

For information about this document contact:

The City of Newcastle

Post: PO Box 489 Newcastle NSW 2300

Australia

Phone: 02 4974 2000

Web: www.newcastle.nsw.gov.au

April © 2022 The City of Newcastle

Authorisation: Chief Executive Officer

© 2022 City of Newcastle



Contents

Message from the Lord Mayor	4
City of Newcastle Asks 2022 Summary	6
City of Newcastle Asks 2022 - Detailed information	12
1. Hunter Park / Broadmeadow	12
2. John Hunter Health and Innovation Precinct	14
3. Equity in access to funding streams	16
3. Richmond Vale Rail Trail	18
4. Affordable Housing	20
6. Climate Change Action	22
The Economic Opportunities of Newcastle	24

Message from the Lord Mayor





Newcastle is the 7th largest city in Australia, a Gateway City both internationally, through our port and airport, and regionally, through rail and road. Newcastle is the economic hub of the Hunter Region with an international profile and a gateway to the rich resources of the Hunter Valley. Newcastle accounts for 30% of the Hunter's developed industrial space and 80% of its office space.

Newcastle is undergoing a transition from a primarily industrial base to one that boasts a diversity of economic foundations. The manufacturing and engineering expertise across the city provides a strong foundation for growth of technology, digital and advanced manufacturing industries. Newcastle and the wider Hunter Region is home to world-class research institutions and a vibrant innovation ecosystem centred on energy and resources, manufacturing and engineering, health technologies, defence / aerospace, the digital and creative industries and a rapidly growing startup and entrepreneurial sector.

Newcastle is an emerging globally significant city; recognised by agencies such as the OECD as a leader in smart city innovation. Newcastle is well positioned to lead economic recovery from COVID-19; being resilient and dynamic. We welcome the piloting of new programs and approaches; we are small enough to care and big enough to deliver. We can play an important role in providing new job opportunities for the future.

City of Newcastle believes that metropolitan cities succeed and perform best when all tiers of government collaborate and work together with business, industry and community to deliver a shared vision. We warmly welcomed the NSW Government's Greater Newcastle Metropolitan Plan delivered in 2018 and have actively contributed to its implementation.

Our 2022 Advocacy document initially focuses on three key Catalyst Areas, identified in the Metropolitan Plan, that require further Government focus and investment over the coming year(s). Furthermore, we have unpacked significant economic and social problems like Affordable Housing and how Government could work with us to enact change at a local level. Finally, we have identified a suite of local projects that could drive local jobs and provide the enabling infrastructure for the advancement of our city.

This submission has been prepared in partnership with key local stakeholders to ensure that a consistent message is being received by government from the Newcastle community. Our asks utilise the latest local evidence and we are seeking to work with our representatives to deliver for our community – we are part of the solution.

City of Newcastle has a proven track record of working collaboratively with all levels of government to deliver the current and future needs of our community, including infrastructure, social programs, financial and environmental sustainability. Such collaboration ensures our City continues to grow as a global gateway city and provide liveability and prosperity for the community.

We welcome you to partner with City of Newcastle. Should you have any questions, please reach out to Melanie Hill, Policy Advisor, on mhill@ncc.nsw.gov.au.

Councillor Nuatali Nelmes

Lord Mayor of Newcastle

City of Newcastle Asks 2022

Summary

1 Hunter Park / Broadmeadow

ASK: Federal/State Government support the redevelopment of Hunter Park. Specific asks to be identified through forthcoming Business Case. Funding of approximately \$500 million will be required to facilitate the redevelopment. Hunter Park is currently identified on the Infrastructure Australia Priority List and Greater Newcastle Metropolitan Plan.

2 John Hunter Health and Innovation Precinct

ASK: The Federal / NSW Government commit to funding Stage 2 of the John Hunter Health and Innovation Precinct worth approximately \$800 million. The John Hunter Health and Innovation Precinct is currently identified on the Infrastructure Australia Priority List and Greater Newcastle Metropolitan Plan.

3 Equity in access to funding streams

ASK: The Newcastle LGA is provided with equality in access to all State and Federal Government grant funding streams. This could be facilitated through the development of a National Urban Policy Framework that recognises the strategic role Second Cities / Gateway Cities / Next Metros play in driving economic opportunities across Australia. We are seeking a consistent three-part dichotomy of Metropolitan / Gateway / Regional for all areas of urban policy and funding.

4 Richmond Vale Rail Trail

ASK: The Federal / NSW Government fund the \$18 million of the Richmond Vale Rail Trail development within the Newcastle local government area (LGA). Further investments will be required in neighbouring councils. The Richmond Vale Rail Trail is a regional walking and cycling trail running through Newcastle, Lake Macquarie, and Cessnock LGAs (32km). It will provide valuable recreational and tourism opportunities for the city and the region and is identified in the Greater Newcastle Metropolitan Plan.

5 Stockton Coastal Erosion Mitigation and Sand Replenishment

ASK: State and Federal action and funding of \$21 million are desperately needed to provide an initial mass sand replenishment of 2.4 million m³ as a long-term solution to Stockton's ongoing erosion. The NSW Government has approved CN's Coastal Zone Management Plan and declared Stockton a coastal erosion hotspot. To date, the Federal Government has not provided any assistance to address coastal erosion at Stockton Beach. Furthermore, a state / national strategy to coastal management is required to mitigate local impacts of climate change.



6 Affordable Housing

ASK: Both Federal and State Government increase investment in affordable housing, including measures to prevent housing stress and vulnerability for very low-income earners. CN continues to support a 25% Affordable Housing Mandate on government-owned land and the introduction of a 15% Affordable Housing Mandate on privately developed land. Additional measures include establishing a minimum income base in the income support system by lifting all income support payments to at least \$69 a day, implementing a new rental investment incentive scheme to replace the discontinued National Rental Affordability Scheme and support measures which increase the supply of affordable housing such as social and community housing build and stock upgrade programs.

7 Climate Change Action

ASK: Federal / State Government provide financial incentives / support local governments to transition their fleet and liquid fuel consumption to further reduce carbon emissions.



8 Catalytic Economic Development Actions

ASK: Funding and political support for the following catalytic economic development actions, which have the potential to transform economic opportunities in Newcastle.

- a. Diversification of the Port of Newcastle – a Newcastle container terminal would create genuine competition between the two port operators and allow NSW importers and exporters to choose the most efficient supply chain for their cargo. CN supports the action currently being taken by the Port of Newcastle in partnership with ACCC to remove the anti-competitive agreements currently in place with Port Botany and Port Kembla.
- b. Offshore Wind Projects – CN has a long history of supporting and implementing renewable energy projects. CN requests Federal Government financial incentives, and an appropriate legislative and regulatory framework to enable the development of large offshore wind projects off the coast of Newcastle. Two potential projects off the coast of Newcastle have been identified, which has the potential to unlock billions in new investment and play a significant role in sustaining our state's future energy needs.
- c. University of Newcastle STEM Regional Transformation Hub – funding to deliver the \$200+ million STEM facility on the University of Newcastle's Callaghan campus. The STEM facility has already received development approval as State Significant Development.
- d. Arts & Culture Packages – increase funding streams for arts and cultural organisations, particularly in Gateway Cities like Newcastle, which traditionally fall between Metropolitan / Regional definitions.
- e. Waste management and circular economy innovation investment.
- f. Rebuild Australia's Strategic Fleet through the creation of a Maritime Strategic Fleet.



9 Key transport projects

ASK: Funding and political support for the following transformative transport projects.

- a. Expansion of Newcastle Light Rail to deliver a broader network connecting the Greater Newcastle region. The Newcastle Light Rail Extension Strategic Business Case identified a route to John Hunter Health and Innovation Precinct via Broadmeadow / Hunter Park. The extension of the light rail should be considered in partnership with the Hunter Park Business Case.
- b. Lower Hunter Freight Corridor feasibility study should be expedited, and a strategic business case developed for the project as a matter of priority. The freight corridor will improve amenity by taking freight trains off main arterials, including at Adamstown and Hamilton North, as well as drive new freight opportunities and connections.
- c. Newcastle to Sydney Fast Rail strategic business case should be prioritised and corridor planning initiated.
- d. Newcastle interchange ferry terminal.
- e. Minmi Road upgrade. The widening of Minmi Road from Wallsend to Fletcher and Minmi is a crucial piece of city infrastructure aimed at alleviating heavy traffic along the main arterial road in the city's growing Western Corridor.

10 Government Service Support

ASK: Funding and political support for identified Government Services including:

- a. Restore GP Access funding to ensure that the Mater Hospital Clinic service can be maintained and the hours of operation at surrounding centres can be maintained.
- b. Establish a Local Government Natural Disaster Mitigation Fund to enable mitigation and resilience measures to ensure our communities are better prepared for climate change.
- c. Indexation of Financial Assistance Grants to local government to 1% of Commonwealth taxation revenue. An initial injection of Financial Assistance Grants worth \$1.3 billion will drive economic recovery across the country at a local level.



11 Local infrastructure

ASK: Federal / State Government partner with CN to deliver vital local infrastructure including:

- a. Flood mitigation at Wallsend. CN is progressing flood upgrades including reconstruction of the Tyrrell Street bridge. Currently CN is ineligible to apply for funding through the Bridges Renewal Program. Changes to this program, which provided opportunities for Federal funding would expedite the works program and deliver a safer Wallsend CBD for the community.
- b. Improved mobile telecommunications coverage. CN is calling for the Federal Government to extend the Regional Connectivity Program and prioritise addressing blackspots that exist across the Newcastle LGA.
- c. Cottage Creek upgrades.
- d. Local Centres Program. The Local Centres Public Domain Program guides upgrades of local and neighbourhood centres throughout the Newcastle LGA. We aim to improve the quality of these centres, which play an important role in the community and local economy.
 - i. Orchardtown Road
 - ii. Wallsend Stage 3A & 3B
 - iii. Mayfield Local Centre
 - iv. Georgetown Local Centre
 - v. Waratah Local Centre
 - vi. East End Public Domain Stage 1 & 2
 - vii. Wood Street Centre
- e. Parks & Playgrounds
 - i. Gregson Park Masterplan implementation
 - ii. Active Hubs program
 - iii. Playground Replacement Program
 - iv. Local playground disability inclusion & accessibility

12 Local sports infrastructure

ASK: Federal / State Government partner with CN to deliver transformative sports infrastructure for the local community including National Park No 1 Sportsground Redevelopment, local Surf Lifesaving Clubs, Active Hub programs in Beresfield, Adamstown / Kotara, Bar Beach, Mayfield and Wallsend, increasing funding and ensuring Newcastle receives its fair share from the Sporting Facility Fund. CN is also calling for a new Government funding stream to provide adequate facilities for women, particularly women's football, rugby league, rugby and AFL, which are all increasing in popularity.

13 Local Parks, Playgrounds and Pathways Program

ASK: Federal / State Government partner with CN to deliver vital local parks, playgrounds and pathways infrastructure including:

- a. Bathers Way
- b. City Centre to Merewether Cycleway, Stage 2
- c. Newcastle West Bi-directional Cycleway – West End Stage 2, Phase 1
- d. Newcastle East End Streetscapes Upgrades and Cycleway
- e. Signalisation of Cycleway Intersections
- f. Cycleway connections with Link Road upgrade
- g. Maitland Road Rail Crossings Cycleway upgrades
- h. Active Transport Infrastructure Program
- i. National Park Cycleway

1 Hunter Park / Broadmeadow

ASK: Federal / State Government support the redevelopment of Hunter Park. Specific asks to be identified through forthcoming Business Case. Funding of approximately \$500 million will be required to facilitate the redevelopment. Hunter Park is currently identified on the Infrastructure Australia Priority List and Greater Newcastle Metropolitan Plan.

Background: The Hunter Park Strategic Business Case was announced by the NSW Government at the 2021-22 Budget. There has been no progress on this business case, with CN aware that Venues NSW and Hunter Central Coast Development Corporation (HCCDC) has only recently appointed a Director to coordinate the process.

CN requests that the delivery of this business case be prioritised and completed by the end of 2022 so that it can be considered in the lead-up to the 2023 NSW state government election. CN also asks that the Hunter Park Business Case be considered expeditiously by NSW Treasury to unlock funding in the short to medium term. The regeneration and construction of new community infrastructure and venues that serve the community and attract visitors and new events will catalyse greater investment in the wider precinct and

city. Hunter Park is a priority project for Greater Newcastle and Hunter Region due to the wider impact it will have on catalysing urban renewal, creating new and improved public places, open space and attracting investment.

Broadmeadow is identified to be a nationally significant sport and entertainment precinct with significant potential for growth to deliver housing and employment development in Newcastle and the Hunter. Located 5 minutes from the city centre of Newcastle, 24 minutes from Newcastle Airport and 2 hours from Sydney, it contains Hunter Park, Broadmeadow Train Station and substantial tracts of land for urban renewal. The significance of the precinct is recognised in the Hunter Regional Plan 2036 (and Draft Hunter Regional Plan 2041) and as a catalyst area in the Greater Newcastle Metropolitan Plan 2036. Hunter Park (Broadmeadow Precinct) is listed on Infrastructure Australia's priority list.

CN identified the wider Broadmeadow precinct as a planning priority and 'area of change' in the Newcastle Local Strategic Planning Statement (LSPS) with research undertaken in 2021 finding that the precinct will create:

Up to 10,000 new jobs;

Up to 10,000 new dwellings; and

Potential population increase of 24,000 by 2041.



This would require a multi-faceted large scale urban renewal project delivered in collaboration between all three levels of government. The precinct provides an opportunity to showcase best practice in place-making, climate change adaptation, active transport, adaptive reuse of heritage sites and large-scale urban renewal. CN is preparing a Place Strategy to support a holistic and coordinated planning approach focussing on place-based infrastructure provision with NSW state agencies.

CN, therefore, advocates for transport considerations and proposals to be considered concurrently with the business case. In particular, CN advocates that the NSW Government upgrade Broadmeadow Train Station into a modern multimodal transport interchange that supports the desired place-based outcome for Broadmeadow. The upgrade to Broadmeadow Train Station is critical to its future functioning as a *"nationally significant sport and entertainment precinct"* as identified in the Greater Newcastle Metropolitan Plan.

In addition to improving public transport, any upgrade of Broadmeadow Train Station must be modern, accessible and support a vibrant and activated 24-hour mixed-use precinct planned to surround the station. The interchange should be a gateway destination that connects Hunter Park and land to urban renewal, allowing for greater permeability across the rail corridor for visitors and residents. Active transport links to and through the station must be provided to allow ease of access by pedestrians and cyclists to promote greener trips. The station must be able to support rapid bus in the interim, and light rail and faster rail in the future to ensure the needs of the wider precinct and Hunter Park can be adequately serviced. Certainty about a light rail connection to the precinct is required. It is imperative that planning and identifying a transport corridor for light rail happens at this early stage of planning for growth in Broadmeadow.

2 John Hunter Health and Innovation Precinct

ASK: The Federal / NSW Government commit to funding Stage 2 of the John Hunter Health and Innovation Precinct worth approximately \$800 million. The John Hunter Health and Innovation Precinct is currently identified on the Infrastructure Australia Priority List and Greater Newcastle Metropolitan Plan.

Background: The John Hunter Health and Innovation Precinct is listed on the Infrastructure Australia Priority List. The precinct was identified as an opportunity to better integrate health, education, research, community services and infrastructure. The NSW Government committed to Stage 1 funding worth \$780 million in the 2019/20 Budget. CN advocates for the NSW Government to commit to the full funding envelope of Stage 2 in the 2022/23 budget worth approximately \$800 million.

The following vision has been developed for the precinct:

"We are building on our history of innovation, tenacity and community strength to create an environmentally sustainable, world class health, research and education precinct in one of the greatest regions in the world. John Hunter Health & Innovation Precinct will be the heart of an ecosystem that brings together partners who share our vision of wellbeing for our communities and prosperity for our region."

The precinct will enable opportunities to partner to solve challenges and develop solutions in all health relevant domains including therapeutics, med-tech, digital health, built environment & sustainability, operations, logistics and processes.

Commitment of the full funding requirement for the John Hunter Health and Innovation Precinct will ensure optimal health outcomes for community in services quality and capacity. It will also ensure realisation of the vision in leveraging opportunity for both industry and parallel health provider co-location and collaboration, in turn driving innovation and regional economic growth.

In addition, the development of this precinct will stimulate investment in the surrounding local centres and neighbourhoods, where investment in key worker housing will be required.



3 Equity in access to funding streams

ASK: The Newcastle LGA is provided with equality in access to all State and Federal Government grant funding streams. This could be facilitated through the development of a National Urban Policy Framework that recognises the strategic role Second Cities / Gateway Cities / Next Metros play in driving economic opportunities across Australia. We are seeking a consistent three-part dichotomy of Metropolitan / Gateway / Regional for all areas of urban policy and funding.

Background: CN would like to express its long-standing frustration with inconsistent classification resulting in the City being ineligible for many grant programs, particularly at a State level.

CN is significantly disadvantaged in both its eligibility and access to a large number of NSW Government Grant programs. In 2020, we provided a detailed submission to the Public Accountability Committee's Inquiry into the integrity, efficacy and value for money of the NSW Government grant programs. As part of the response to this inquiry, CN engaged the Hunter Research Foundation Centre (HRFC) to conduct an independent review of Newcastle's experience with a range of state and federal government grants.



Overwhelmingly the report points to inconsistencies in the eligibility for NSW government funds for the Newcastle Local Government Area (LGA). The Hunter Research Foundation Centre identified multiple regional funding sources, where Newcastle had been deemed ineligible, but no metropolitan alternative has been provided. These funding sources totalled \$5.86 billion and included:

NSW Regional Growth Fund

Stronger Communities Fund

Snowy Hydro Fund

Regional Sports Infrastructure Fund

Regional Cultural Fund

Growing Local Economies Fund

Regional Skills Relocation Grant Fund

If Newcastle's share of these funds was in line with its share of Gross State Product in 2019, Newcastle LGA would have received an additional \$170.9 million in NSW Government grants. For comparison, Lake Macquarie LGA and Central Coast LGA were eligible for all six funding sources.

The report also identified that the Newcastle LGA had received 0.06% of Restart NSW funds allocated to date, well below its share of the state's population (2.11%) and its share of Gross State Product (2.91%).

Since making the initial research report, Newcastle has missed out on opportunities to apply for a share of the \$20 million Events Boost program, the \$35 million Electric Vehicle Fast Charging grant program and most recently the latest round of the Stronger Country Communities Fund. No equivalent metropolitan grant, which CN could apply for, has been provided.

An alternative approach would be to define cities like Newcastle and Wollongong in a category called Gateway Cities. A three-component dichotomy of Metropolitan / Gateway / Regional would provide for a stronger approach to policy development and the promotion and economic development of NSW into the future. In partnership with Wollongong and Geelong, CN have established a Gateway Cities Alliance to advocate and collectively explore economic opportunities.

*Mural artist: Fintan Magee (under the Big Picture Fest);
Image: Wiltliving Photography.*





4 Richmond Vale Rail Trail

ASK: The Federal / State Government to fund the \$18 million of the Richmond Vale Rail Trail development within the Newcastle LGA. Further investments will be required in neighbouring councils. The Richmond Vale Rail Trail is a regional walking and cycling trail running through Newcastle, Lake Macquarie, and Cessnock LGA's (32km). It will provide valuable recreational and tourism opportunities for the city and the region and is identified in the Greater Newcastle Metropolitan Plan.

Background: The Hunter and Central Coast Regional Planning Panel approved Development Application DA2021/00641 for sections of a 15km walking and cycling trail connecting Shortland to Minmi, Fletcher and Pambalong Nature Reserve. The approval covers approximately 13km of the trail within the Newcastle LGA with approval of a further 2km section within the Hunter Wetlands National Park to be sought in 2022.

A socio-economic impact assessment undertaken on a 'whole of trial' basis demonstrated a cost benefit ratio of 2.4, highlighting benefits such as safer and improved off-road riding experiences, greater access to natural areas, flora and fauna, growth and diversification opportunities for local business, health, fitness and recreation opportunities, and connection of National Parks and natural areas.



5 Affordable Housing

ASK: The Federal / State Government increase investment in affordable housing, including measures to prevent housing stress and vulnerability for very low-income earners.

Background: The shortage and rising costs of rental properties and affordable home ownership are having significant social and economic impacts in cities and towns across Australia, including rural and regional communities. This is due to a range of factors including changes to recent migration patterns, cheap finance and labour and material shortages in the construction sector. The impacts on local governments and communities includes housing stress for individuals and families, difficulty in attracting and housing key workers and an increase in homelessness. Whilst the provision of affordable housing is not a local government responsibility, councils often facilitate affordable housing within their communities, operating within state/territory planning, financial and other legislation requirements. For councils looking to drive a locally led economic recovery and create new jobs in their communities, an appropriate supply and mix of housing to suit diverse community needs is crucial.

CN has been actively responding to Affordable Housing challenges in the Newcastle LGA. A Memorandum of Understanding (MoU) between the NSW Government – Land and Housing Corporation and CN was signed in late 2021. The objective of the MoU is to deliver improved outcomes in social and affordable housing for the people of Newcastle. An important feature of the MOU will see CN supporting LAHC’s redevelopment program through the provision of an annual payment equivalent to the rates paid by LAHC in the Newcastle LGA for the next three years. The payment, which will be matched by LAHC, will be reinvested into funding new social housing in the region during the same period.

CN calls on both the Federal and State Government’s to lean into the Affordable Housing challenge too. CN continues to hold the view that a 25% Affordable Housing Mandate on government owned land should be supported, with land owned by the government that is fast-tracked for development having a 25% mandate of Affordable Housing. Likewise, CN supports the introduction of a 15% Affordable Housing Mandate on privately developed land. 15% of dwellings designated as Affordable Housing will be available for rental or sale to low to moderate income households.



Additional measures to support prevention of housing stress and an increase in access to and supply of affordable housing is critical to the wellbeing of the population.

Prevention:

Social security - Establish a minimum income base in the income support system by lifting all income support payments to at least \$69 a day and ensure supplementary payments meet specific needs, including lifting Commonwealth Rental Assistance by 50%.

Rental Support:

Implement a new rental investment incentive scheme to replace the discontinued National Rental Affordability Scheme which reduces concessional tax treatment of 'negatively geared' property investments and provides a two-tier investment incentive for construction of new rental housing for people with low or modest incomes.

Affordable Housing Supply

Support measures which increase the supply of affordable housing such as social and community housing build and stock upgrade programs.



6 Climate Change Action

ASK: The Federal / State Government provide financial incentives / support local governments to transition their fleet and liquid fuel consumption to further reduce our carbon emissions.

Background: CN have been champions for renewable energy and climate action for over 20 years, commencing before the development of our first plan Greenhouse Action In Newcastle (GAIN) in 2001. Our newest strategic plan, the Newcastle Climate Action Plan (2021-2025), outlines our commitment to reach net zero emissions for our operations by 2030.

CN has already delivered significant local outcomes including:

- a. Becoming a partner of the Climate Council's Cities Power Partnership and commit to five key actions to reduce carbon emissions (2017).
- b. Formally committing to the principles and targets of the Paris Climate Agreement (2018)
- c. Commencing an accelerated upgrade of street lights to LED (2018)
- d. Commencing upgrading its car fleet to electric vehicles (2018)
- e. Commencing installing electric fleet vehicle fast charges throughout the city (2018)
- f. Becoming a member of the International Council for Local Environmental Initiatives (ICLEI) and commit to the requirements of the Global Covenant of Mayors for Climate & Energy (2018)
- g. Taking the Cities Race to Zero Pledge (2021).
- h. Constructing a 5 megawatt solar farm on the close landfill site at Summerhill Waste Management centre (2019)



- i. Installing rooftop solar photovoltaic on Council's Administration Centre, along with EV charging, IoT sensors and smart building controls (2019),

- j. Making the switch to 100% of the electricity used across Council's operations produced from renewable sources (2020).

- k. Commencing development of a zero emissions vehicles fleet transition plan (2020)

- l. Taking delivery of its first fully electric truck (2021)

To achieve CN's goals, our Climate Action Plan is structured around four key themes for reducing emissions:

- 100% renewable energy supply

- Zero emissions transport

- Best practice energy, water and waste

- Reduce emissions supply chains

It is critical that communities are prepared for the impacts of climate change and adopt complementary strategies for reducing (mitigation) and managing (adaptation) these impacts.

Local governments and their communities are on the frontline when dealing with the risks and impacts of climate change. Councils need to prepare for the unavoidable impacts of climate change (through adaptation) and play a significant role in reducing Australia's carbon footprint by mitigating the CO2 emissions from their assets and supporting emission reduction efforts by their local communities. They need to work with their communities to transition them to a low carbon future.

To achieve our ambitious targets, funding from the Federal / State Government is required to assist CN reduce our electricity and liquid fuel consumption as well as fast tracking citywide initiatives to further reduce our carbon emissions.

Summerhill

Industry Focus - Circular Economy

Skills - Advanced Manufacturing, STEMM Skills, Waste Management

Economic Opportunities

Summerhill Waste Management Centre is transforming to become a resource recovery hub and green energy precinct.

Government Investment

CN has funded the development of an organics facility at Summerhill, which may act as a catalyst for further investment.



Hunter Park

Industry Focus - Sports and Entertainment Precinct

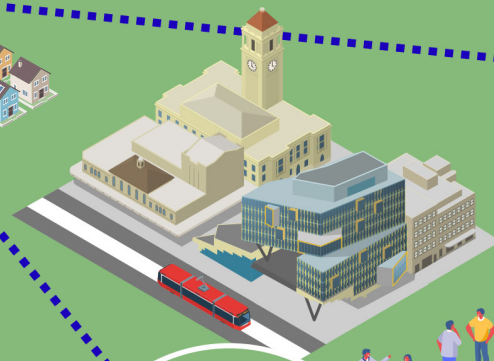
Skills - Event Management, Sports Science, Arts and Entertainment Management, Hotel Management, Retail.

Economic Opportunities

Hunter Park has the opportunity to become a nationally significant sporting and entertainment destination incorporating a best in class entertainment centre and mixed leisure and swimming facility. The new urban precinct will incorporate open space, transport infrastructure, new employment opportunities and residential development.

Government Investment

Infrastructure Australia has identified Hunter Park as a nationally significant infrastructure project in its 2021 Infrastructure Priority List



John Hunter Hospital

Industry Focus - Health Innovation

Skills - Biomedical Science, Public Health, Communications

Economic Opportunities

The John Hunter Health and Innovation Precinct will deliver updated and enhanced facilities providing a larger facility to meet the demands of the Greater Newcastle, Hunter New England and northern NSW Regions. The precinct will encourage partnership with key health, education and research partners.

Government Investment

The NSW Government has committed \$780 million for Stage One of the John Hunter Health and Innovation Precinct. Further funding for Stage Two is being considered.

City Centre

Industry Focus - Innovation/Education/Tourism

Skills - Research, Prototyping, Advanced Manufacturing, Education, Communications, Marketing

Economic Opportunities

A business district in the West End; and education/innovation precinct in the Civic Precinct; and arts/tourism opportunities in the East End and Civic Precincts.

Government Investment

All levels of government have invested in the deployment of smart city infrastructure throughout Newcastle City Centre. This infrastructure underpins the city-scale testbed for technology development and prototyping.



Callaghan

Industry Focus - STEMM

Skills - Research, Innovation, Project Management, Digital Literacy, Communications

Economic Opportunities

The University of Newcastle is developing a \$207 million Regional Transformation Hub within the Hunter STEMM Precinct.

Government Investment

State Government Development Approval has recently been granted.

Williamstown

Industry Focus - Aerospace/Defence

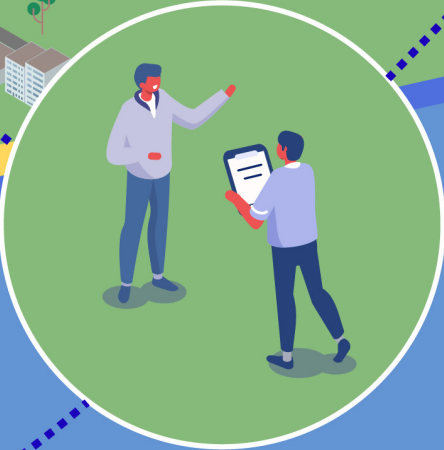
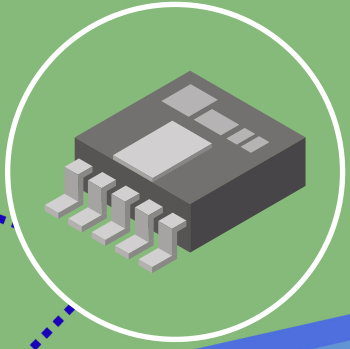
Skills - STEMM, Aerospace Engineering, Advanced Manufacturing

Economic Opportunities

Astra Aerolab, which is co-located in Newcastle Airport and the RAAF Williamstown Base, will become Australia's pre-eminent space for innovation in aviation, defence and aerospace-related manufacturing, maintenance, research and education.

Government Investment

NSW Government announced a Special Activation Precinct (SAP) at Williamstown as a part of its 20 Year Economic Vision for Regional NSW. The Federal Government has committed funding to extend the runway to enable Code E aircraft. This will expand the opportunity for international flights in / out of Newcastle



Newcastle Port

Industry Focus - Renewable Energy/Hydrogen

Skills - STEMM, Project Management, Supply-Chain Management, International Relations

Economic Opportunities

The existing port infrastructure has capacity to generate port-associated industry and regional/local employment opportunities. Renewable energy/ hydrogen has been identified.

Government Investment

A Renewable Energy Zone has been identified in the Hunter / Central Coast.



Blank on purpose

Blank on purpose

