

Subject: LMM 27/08/2019 - Population projections for the Greater Newcastle Metropolitan Area

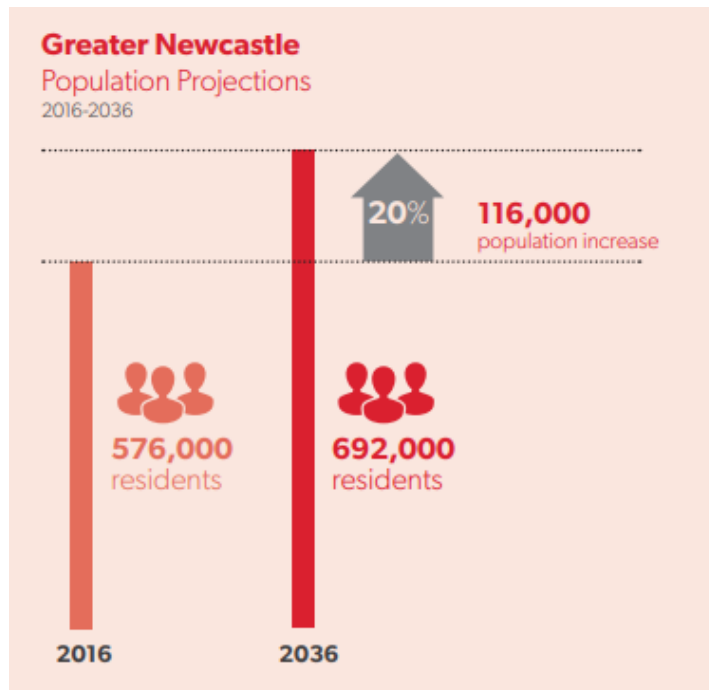
MOTION

That City of Newcastle:

1. Notes that the NSW Department of Planning, Industry and Environment (DPIE) predict that the NSW population will grow by 2.71 million people between 2011 and 2036¹; while at the same time predicting that the population of the Greater Newcastle Metropolitan Area will increase by 116,000 between 2016 and 2036²;
2. Notes the recently released Regional Australia Institute report, *Regional Population Growth: Are We Ready?* suggests that Greater Newcastle's population could increase by more than 1.2 million by 2056 if a regional growth plan was adopted by governments to more widely distribute the future settlement pattern³;
3. Writes to Minister for Planning and Public Spaces, the Hon. Rob Stokes MP, asking for a review of the population projections for the Greater Newcastle Metropolitan Area, to ensure that appropriate planning is undertaken for service and infrastructure delivery for the community.

Background:

The Greater Newcastle Metropolitan Plan 2056 suggests that forecasts of population, housing and employment growth of Greater Newcastle also a platform for councils to collaborate with the Commonwealth on intergovernmental agreements.



Greater Newcastle Metropolitan Plan 2056, p.39

¹ <https://www.planning.nsw.gov.au/Research-and-Demography/Demography/Population-projections>

² <https://www.planning.nsw.gov.au/-/media/Files/DPE/Plans-and-policies/greater-newcastle-metropolitan-plan-2018.pdf>

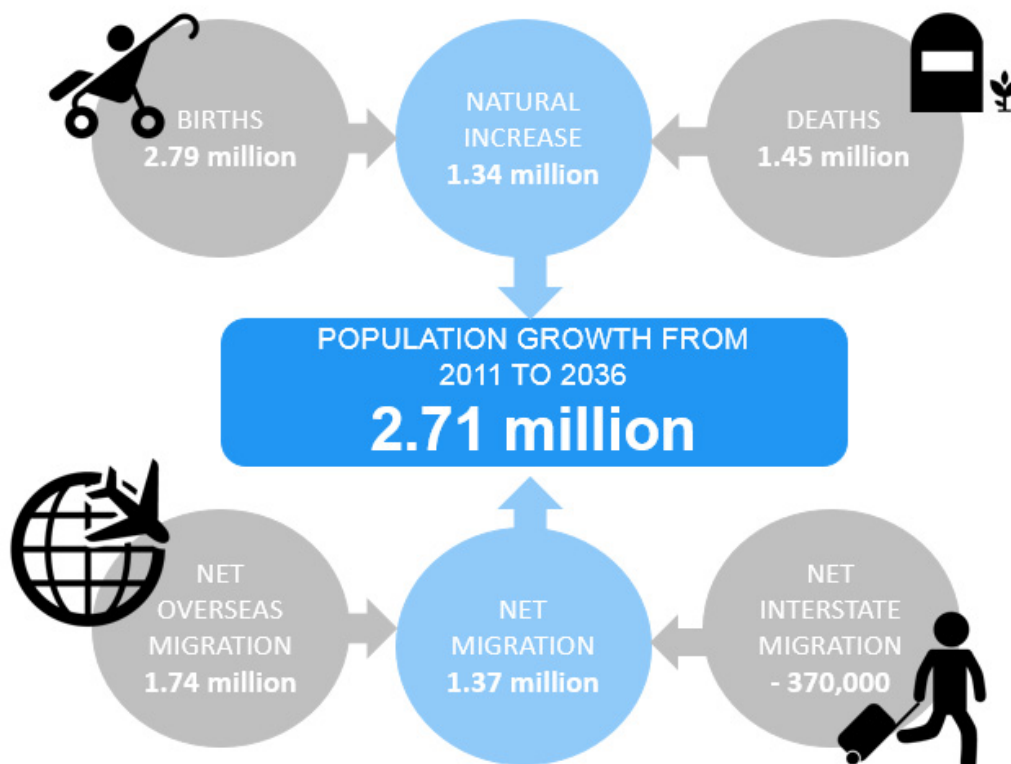
³ http://www.regionalaustralia.org.au/home/wp-content/uploads/2019/08/RAI_2019_RegionalPopulationGrowthReport_WebFinal-1.pdf

The Plan suggests that Greater Newcastle's population will grow by 116,000 between 2016 and 2036.

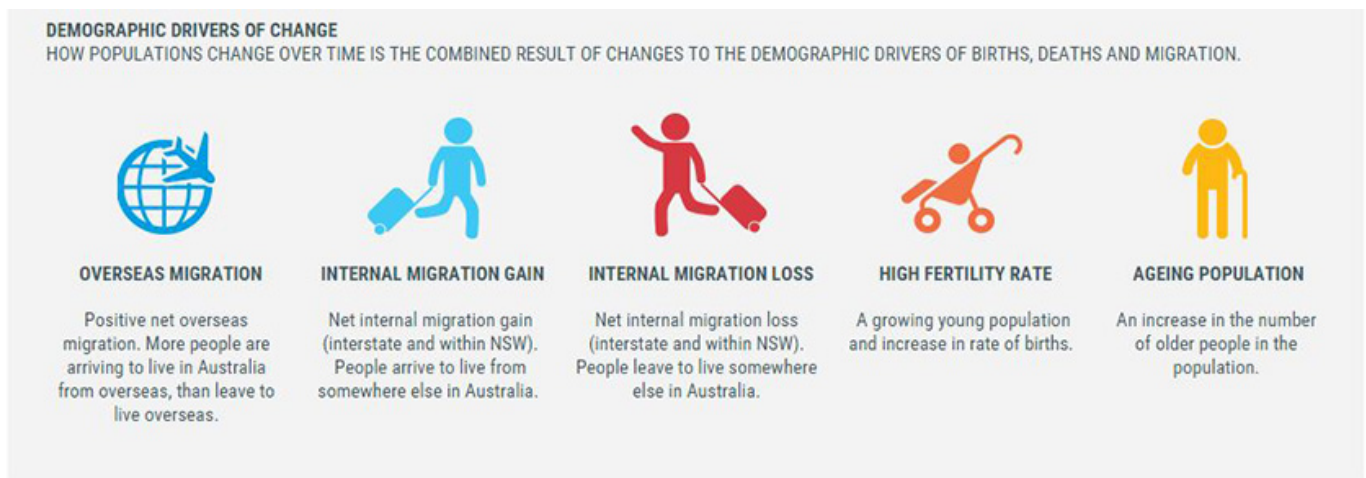


Greater Newcastle Metropolitan Plan 2056, p.39

Population Projection for NSW



NSW Department of Planning, Industry and Environment population projections are based on assumptions that take into account trends for births, deaths and migration.



The Government predicts the NSW Population will increase by 2.71 million between 2011 and 2036.

Source: <https://www.planning.nsw.gov.au/Research-and-Demography/Demography/Population-projections>

Regional Australia Institute: Regional Population Growth: Are We Ready?

The Regional Australia Institute report, *Regional Population Growth: Are We Ready?* suggests that Greater Newcastle's population could increase by more than 1.2 million by 2056 if a regional growth plan was adopted by governments to more widely distribute the future settlement pattern

| Area | 2016 | Population scenarios | | | | |
|-------------------|-----------|-------------------------------|---|-----------|---|-----------|
| | | Scenario I: business as usual | Scenario II: Concentrated regional growth | | Scenario III: Dispersed regional growth | |
| | | | Moderate | High | Moderate | High |
| Inner Sydney | 1,087,300 | 1,866,762 | 1,866,762 | 1,698,916 | 1,792,490 | 1,380,092 |
| Outer Sydney | 3,594,500 | 7,390,825 | 6,478,580 | 5,616,440 | 5,925,785 | 4,562,441 |
| Wollongong | 211,750 | 284,562 | 568,562 | 838,373 | 568,562 | 838,373 |
| Shoalhaven | 99,600 | 121,863 | 324,899 | 478,182 | 324,899 | 478,182 |
| Greater Newcastle | 575,800 | 846,180 | 1,271,389 | 1,878,281 | 1,271,389 | 1,878,281 |
| Canberra | 405,447 | 652,053 | 652,053 | 652,053 | 895,243 | 1,322,583 |
| Port Macquarie | 79,650 | 113,830 | 113,830 | 113,830 | 259,821 | 382,401 |
| Tamworth | 61,400 | 83,308 | 83,308 | 83,308 | 200,289 | 294,783 |
| Wagga Wagga | 65,850 | 93,901 | 93,901 | 93,901 | 214,805 | 316,147 |

Source: UniSA population scenarios