

Members of the community are invited to view and make comment on the following proposed road names.	
Description	Naming of six (6) new public roads in Minmi
Location	605 & 610 Minmi Road, Minmi - Lots 2 & 3 DP1230960
Naming Authority	City of Newcastle
Related Development Application No.	DA2015/10393
Land Information Specialist Responsible for proposal management	Joe Parmenter
Land Information Specialist Contact No.	4974 2513
Notice/Submission period	15 business days - ceasing on 10 May 2024

## Exhibition

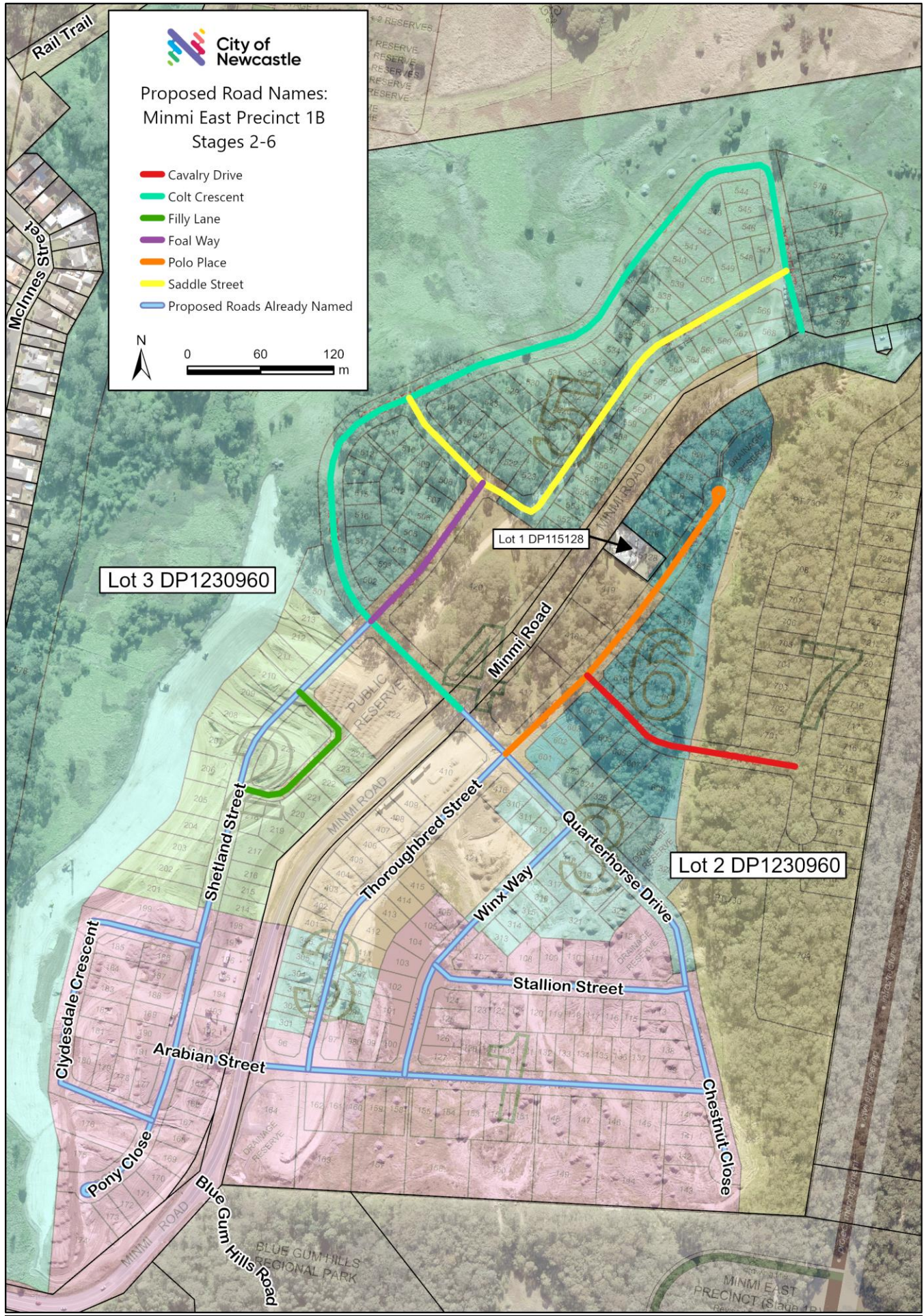
City of Newcastle is proposing road names for six (6) new public roads in Minmi.

These roads need to be named to facilitate address numbering and to aid emergency service wayfinding and service delivery. This road naming proposal relates to Stage 1B (Stages 2-6) of the Minmi East Precinct development, a new greenfield subdivision approved as part of DA2015/10393. The naming theme chosen for these roads was words related to horses. This theme is a continuation of the theme used for Stage 1 of the development.

Please see the below table and attached location map for further details on the proposed road names.

Proposed Road Name	Suburb	Name Origin	Road Extent Description
Cavalry Drive	Minmi	Cavalry historically refers to soldiers who fought on horseback.	The road begins at its intersection with Polo Place and continues to the south-east for 194 metres before coming to an end.
Colt Crescent	Minmi	A colt is a young male horse, usually below the age of four years.	The road begins at its south-western intersection with Minmi Road and continues in a north-western direction, then a north eastern direction, then a southern direction for a total of 831 metres, before coming to an end at its north-eastern intersection with Minmi Road.
Filly Lane	Minmi	A filly is a young female horse, especially one less than four years old.	The road begins at its southern intersection with Shetland Street and continues in an eastern direction, then a north-eastern direction, then a north-western direction, for a total of 152 metres before coming to an end at its northern intersection with Shetland Street.
Foal Way	Minmi	A foal refers to a young horse.	The road begins at its intersection with Colt Crescent and continues to the north-east for 146 metres before coming to an end at its intersection with Saddle Street.
Polo Place	Minmi	A polo pony is the term used for a horse used in the game of polo.	The road begins at its intersection with Quarterhorse Drive and continues to the north-east for 299 metres before coming to an end in a cul-de-sac.
Saddle Street	Minmi	A saddle is a seat fastened on the back of a horse for riding.	The road begins at its eastern intersection with Colt Crescent and continues in a south-western direction and then a north-western direction for a total of 433 metres before coming to an end at its western intersection with Colt Crescent.

**Location Map:**



## Submissions

Any person, during the specified submission period, may make submissions to the City of Newcastle concerning the proposed road names. The submissions must specify:

- the grounds of support or objection.
- quote 'Minmi Road Naming - May 2024' in the title of the submission.
- include the submitter's name, address, and daytime contact number; and
- where possible, an email address.

**Please note:** Submissions will only be considered that directly relate to the proposed road names.

Submissions must be made in writing and submitted via e-mail or post. Where possible, City of Newcastle prefers to communicate with submitters via email to support sustainable environmental practices and improved timeliness of any correspondence.

**E-mail:**

[addressing@ncc.nsw.gov.au](mailto:addressing@ncc.nsw.gov.au)

**Post:**

City of Newcastle

PO Box 489

**NEWCASTLE NSW 2300**

### Submission closing date

Submissions must be received by 5.00 pm on 10 May 2024.

Notice published on City of Newcastle website on 18 April 2024.